



NEWSLETTER

July 2025

Howdy folks, looks like summer's well and truly here 😊 Hope you're all keeping cool in this heat. In the meantime, it's time for this month's edition of the newsletter, packed with your favourite news, interviews, facts as well as fun and games. Let's dive right in 😊

Jakester



What's been happening at Thrive?

Lately we have been going on days out to Paulton's Park for the summer. As you can see the guys have been loving it, having a thrill on the rides, a ride on the train and looking at all the attractions there 😊



In upcoming news, we have our summer fair on the 6th September to look forward to. Parents, carers and even friends are more than welcome to come, so bring them along. More on the fair to come in the next few months as we prepare, so watch this space! 😊

Question Time



This month
it's our Delightful Drew
and Lovable Lewis



How long have you been coming to Thrive?

Drew: I've been coming since March 2019 for Thrive, I've also been coming to Windward since March 2007

Lewis: Now you're talking, 9 years this year in December

What do you enjoy most about Thrive?

Drew: I like everything really. That's not really anything I don't like. I like working with the people

Lewis: All the guys who come here, I love all the people who come here to the day more pleasurable so they enjoy their day

What would you say to someone who's interested in joining or working at Thrive?

Drew: I would tell them everything that we do, and give them a tour round, and ask if they're interested in coming here

Lewis: It's a friendly, relaxing environment and we all work together to make the days special

More questions on next page

Question Time (part 2)

Do you have a favourite activity?

Drew: It's hard to say cos I like them all

What do you feel that you've gotten out of Thrive?

Drew: Enjoying the activities, spending time with my friends and helping them out

What do you feel you help bring to Thrive?

Lewis: Hopefully fun times, pranks and jokes and at times education when doing 'Dodgy' DIY

How many ants would it take to lift an elephant?

Drew: Lots

Lewis: Good grief, it would have to be quite a few. Maybe two on each foot, so 8

If roses are red, why are violets blue?

Drew: Something to do with the blue sky

Lewis: Because sugar is sweet, and so are you!

Fun Facts

Identical twins don't have the same fingerprints. It really *is* true that no one's fingerprints are the same!

The world's oldest cat lived to 38 years and three days old!

The Universe's average colour is called 'Cosmic latte'

Water might not be wet. This is because most scientists define wetness as a liquid's ability to maintain contact with a solid surface, meaning that water itself is not wet, but can make other objects wet.

Mount Everest isn't the tallest mountain on Earth. Mauna Kea and Mauna Loa in Hawaii, the twin volcanoes, are taller than Mount Everest due to 4.2km of their heights being submerged underwater

Jakester's Jokes

Did you hear about the actor who fell through the floorboards? **He was just going through a stage**

What's worse than raining cats & dogs? **Hailing taxis**

Why did the tomato blush? **Because it saw the salad dressing.**

What are the strongest days of the week? **Saturday and Sunday. All the others are weekdays**

What did the dog say when he sat on sandpaper? **Ruff**

Wordsearch

This month's theme is Summer

S	J	U	N	R	N	N	S	B	M
S	U	N	L	U	P	O	K	A	G
H	V	N	U	M	H	X	E	R	O
D	S	Z	I	C	A	R	Y	B	O
D	S	E	A	X	C	A	B	E	C
M	E	E	A	E	D	O	N	C	V
L	B	S	C	I	F	C	V	U	X
T	H	I	L	T	Y	I	W	E	R
P	O	O	L	L	G	K	H	E	L
T	H	Z	X	F	Z	X	E	O	H

Sun

Beach

Barbecue

Ice Cream

Holiday

Sea

Pool

Answers in next month's newsletter

Spot the difference

Can you find all 10 differences?



Answers in next month's newsletter

Quiz Time

What were Sir Winston Churchill's last words?

In which state did Britney Spears grow up?

Which musician holds the record for most GRAMMYs of all time?

True or false: The Great Wall of China can be seen from space

What is the largest island in the world?

Who is credited with the invention of the telephone?

Answers in next month's newsletter

Who's that Celebrity?

Can you guess the celebrities from their past pictures?

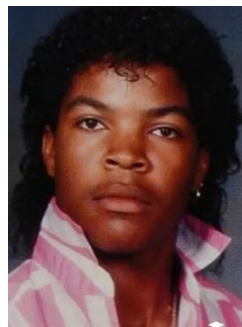
1.



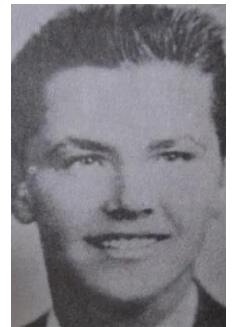
2.



3.



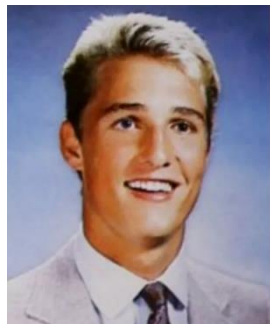
4.



5.



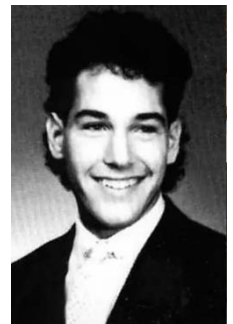
6.



7.



8.



Answers in next month's newsletter

Riddle me this

Where does today come before yesterday?

What invention lets you look right through a wall?

If you're running in a race and you pass the person in second place, what place are you in?

What has words, but never speaks?

What runs all around a backyard, yet never moves?

Answers in next month's newsletter

Emoji time

Can you guess the subjects based on the emojis?

Movie



Food



Word



Animal



Game



Answers in next month's newsletter

Answers to last month's puzzles and games

Wordsearch

I H H N L S B H R T
H P A E C Q I F U R
J Z W A L F I N E I
P W J C C N H A C C
H T X A W G D I O I
L H Q O U N L J O C
L U R O U P X Z I R
N B O S F E Q P I I
C U S T A R D E E A
C A K E B J Z F E M

Quiz Time

Which planet is closest to the sun? **Mercury**

What was the old name for a Snickers bar before it changed in 1990? **Marathon**

In what year did Tony Blair become British Prime Minister? **1997**

In the TV sitcom Friends, what is the name of the coffee shop called? **Central Perk**

Street artist Banksy is originally associated with which British city? **Bristol**

What is a group of pugs called? **A grumble**

Who's that Celebrity?

1.



Courtney
Cox

2.



Jennifer
Lawrence

3.



Jennifer
Lopez

4.



Steve
Buscemi

5.



Megan
Fox

6.



Victoria
Beckham

7.



Zooey
Deschanel

8.



Emma
Stone

Answers to last months riddles on next page

Answers (continued)

Riddle me this

I shave every day, but my beard stays the same. What am I? **A barber**

The more of this there is, the less you see. What is it? **Darkness**

What can't be put in a saucepan? **It's lid**

What goes up and down but doesn't move? **A staircase**

What belongs to you, yet other people use it more than you do? **Your name**

What kind of band never plays music? **A rubber band**

Emoji time

Movie



Harry Potter

Food



Onion ring

Word



Cowboy

Animal



Starfish

Game



Battleships

And that's another newsletter come to a close. Hope you've all enjoyed it. Don't forget to leave your thoughts and ideas in the feedback form on the next page. Til next time 😊

Jakester



Feedback

Leave your thoughts and ideas for the newsletter here and either mail them to:
Speedwell House, Speedwell Close, Chandlers Ford SO53 4BT or just bring it in
whenever you're next at Thrive 😊

This image shows a single sheet of white paper with horizontal orange ruling lines. The lines are evenly spaced and run across the width of the page. There are no vertical margin lines or other markings present. The paper appears to be a standard sheet of lined notebook paper.